



PRESCHOOL DONE



GRADES K-2 DONE



ALL OTHER
GROUPS DONE

JellyFish Flow



Art Class in a Box



1. USE BLUE PAINT TO OUTLINE THE JELLYFISH SHAPE AND ALLOW IT TO DRY.
2. REMEMBER TO INCLUDE THE TENTACLES AND ORAL ARMS IN YOUR DESIGN.



3. WET THE ENTIRE BACKGROUND (AVOIDING THE JELLYFISH) AND APPLY BLUE PAINT TO THE PAPER SURROUNDING THE JELLYFISH. ALLOW THE PAINT TO FLOW AND CREATE AN ABSTRACT IMAGE. LET IT DRY THOROUGHLY.



4. SHAPE THE JELLYFISH'S HEAD WITH PINK (THE "HEAD" IS CALLED THE BELL OR UMBRELLA).
5. PAINT THE NORMAL TENTACLES (THAT LOOK LIKE LONG THIN SPAGHETTI) PINK ALSO.



6. DROP DOTS OF THE NEON YELLOW INTO THE BELL AS A SPECKLE DESIGN.
7. LET THE BELL DRY. THEN, USE MORE NEON YELLOW AS AN ACCENT COLOR ON TENTACLES BELOW THE BELL.



8. ONCE THE ENTIRE PAINTING IS AGAIN FULLY DRY, ADD ANOTHER LAYER OF COLOR ON TOP TO MAKE THE JELLYFISH MORE CONTRASTED. GREEN ACCENTS WORK REALLY WELL.
9. PAINT THE ORAL TENTACLES WITH PINK. THEN, MAKE YELLOW-ORANGE DOTS ON THEM.



10. ADD A FEW BLUE, SHADOWY JELLYFISH IN THE BACKGROUND OF THE PAINTING SO YOU CAN CREATE THE ILLUSION OF HAVING MORE JELLYFISH FURTHER AWAY. MAKE THEM LOOK LIKE THEY ARE DANCING!



11. CREATE MORE DEPTH WITH DARK PURPLE SHADOWS UNDER THE RIGHT EDGES OF THE LARGE JELLYFISH.



12. ADD MORE DETAILS TO THE JELLYFISH LIKE SHADOWS ON THE "ORAL ARMS."
13. SPLASH NEON YELLOW OR GREEN PAINT IN THE BACKGROUND!



@ClassyArtistBox
#ClassyArtistBoxKids

Stingray Stipple



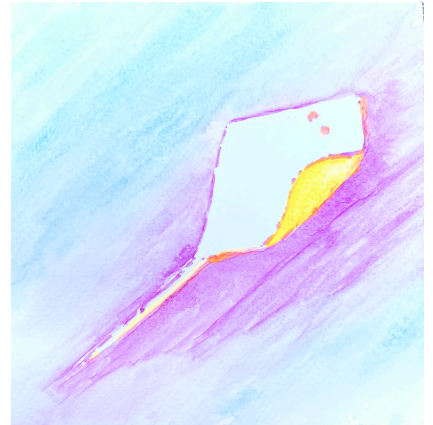
My Art Class in a Box



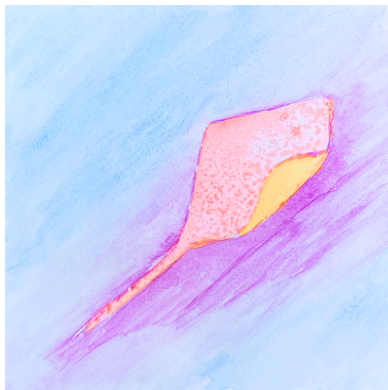
1. THIS WEEK, OUR TASK IS TO CREATE A STINGRAY. BEGIN BY SKETCHING A FAINT OUTLINE AROUND THE SHAPE OF THE STINGRAY. MAKE FAINT MARKS FOR THE EYES.



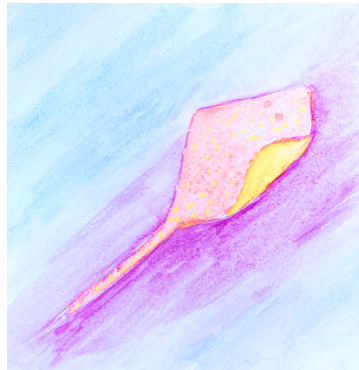
2. PAINT BLUE ALL AROUND THE STINGRAY. PAINT PURPLE UNDER THE STINGRAY. THEN, SPRINKLE SOME SALT UNDER THE STINGRAY BEFORE IT DRIES.



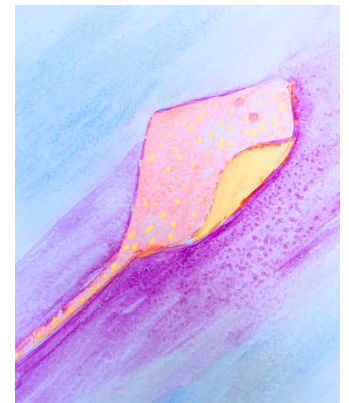
3. ONCE THE BACKGROUND IS DRY, CONTINUE BY PAINTING THE UPTURNED WING OF THE STINGRAY WITH THE YELLOW-ORANGE.



4. PAINT THE TOP OF THE STINGRAY PINK. SPRINKLE A PINCH OF SALT ON TOP OF THE WET, PINK PAINT. LET DRY. THEN, RUB THE SALT OFF OVER THE TRASH OR OUTSIDE.

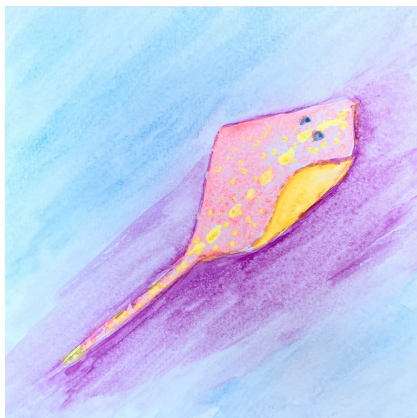


5. MAKE YELLOW-ORANGE SPECKLES (ALSO CALLED STIPPLES) ON THE TOP OF THE STINGRAY.

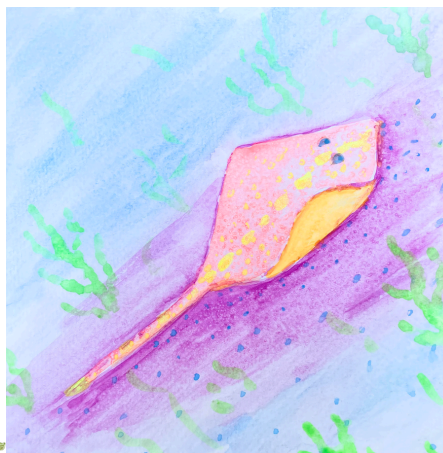


6. LAYER MORE BLUE ON THE BACKGROUND IF YOU THINK IT NEEDS TO BE SMOOTHED OUT OR DARKER.

THEN, LAYER MORE PURPLE ON THE GROUND. PUT SALT ON IT, LET IT DRY, THEN BRUSH IT OFF.



6. LET THE PAPER DRY COMPLETELY. THEN, DARKEN THE EYES WITH MORE BLUE AND/OR PURPLE. THEN, ADD SOME PURPLE OUTLINING AROUND THE UNDERBELLY OF THE STINGRAY SO IT STANDS OUT EVEN MORE.



7. ONCE THE BACKGROUND IS TOTALLY DRY, MAKE GREEN SEAWEED ON THE OCEAN FLOOR. THEN, DOT BLUE STIPPLES ON THE GROUND UNDER THE STINGRAY SO IT LOOKS LIKE PEBBLES OR SAND.



@ClassyArtistBox
#ClassyArtistBoxKids

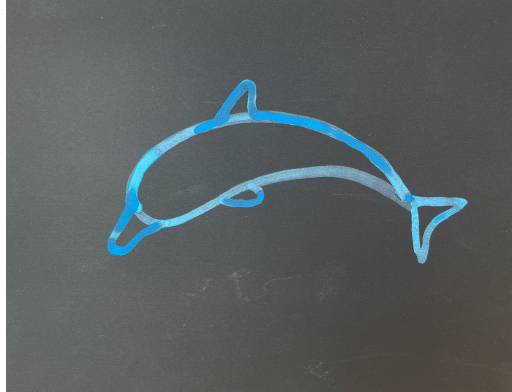
Dancing Dolphin



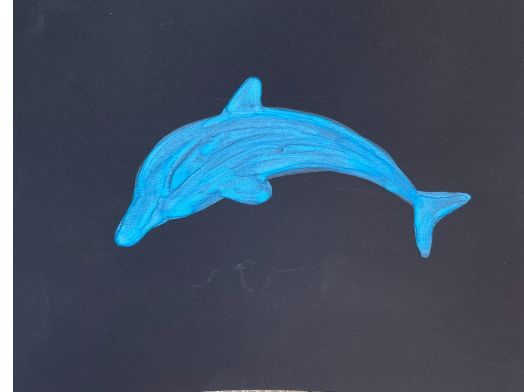
Art Class in a Box



1. LIGHTLY OUTLINE THE SHAPE OF A CURVED, HORIZONTAL TEARDROP (SEE ABOVE).
2. MAKE A TAIL AT THE NARROW END.
3. ADD IT'S ROSTRUM (NOSE).



4. CREATE THE OUTLINE OF THE DORSAL FIN ON TOP.
5. OUTLINE THE PECTORAL FIN UNDER IT'S CHEST. MAKE ADJUSTMENTS AS NEEDED.



6. FILL IN THE DOLPHIN WITH THE BLUE PAINT. YOU WILL PROBABLY HAVE TO DO TWO LAYERS OF THIS. LET THE LAYERS DRY BETWEEN.



7. MAKE A SUNSET-INSPIRED BACKGROUND. START WITH THE PINK COLOR ON YOUR WATERCOLOR PALETTE. THEN, USE IT TO OUTLINE THE DOLPHIN. LEAVE A LITTLE BLACK SPACE AROUND THE DOLPHIN. THEN, DO ANOTHER OUTLINE WITH THE CORAL COLOR. LEAVE BLACK OUTLINES AROUND EACH SUBSEQUENT COLOR.



8. CONTINUE OUTLINING THE DOLPHIN WITH THE ORANGE/YELLOW-ORANGE PAINT COLORS. LEAVE SPACE BETWEEN EACH NEW OUTLINE IF YOU LIKE HOW THE EXAMPLE LOOKS. IF YOU PREFER SOMETHING DIFFERENT, DO IT!



9. PROCEED DOWN THE LINE OF COLORS TOWARDS THE WARMER TONES, SUCH AS YELLOW, AND FINISH OFF WITH A GREEN OUTLINE. IF YOU NEED TO CORRECT ANY ERRORS, TRY GOING BACK OVER THEM WITH THE DESIRED COLOR. FOR MISTAKES ON THE BACKGROUND, YOU COULD THINK ABOUT ADDING EXTRA LINES OR DOTS BETWEEN THE PAINT COLORS TO MAKE THE MISTAKE INTO SOMETHING COOL!

Colorful Shark Pup



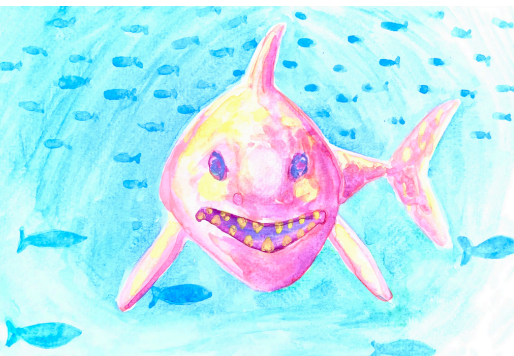
Art Class in a Box



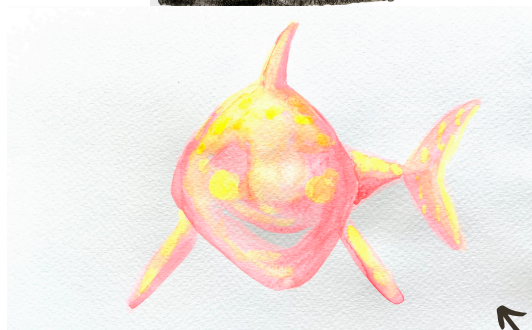
1. USE THE CORAL COLOR TO OUTLINE THE SHAPE OF THE SHARK'S HEAD.
2. ON TOP OF THE HEAD, ADD A DORSAL FIN.
3. MAKE THE PECTORAL FINS BELOW THE BELLY.
4. MAKE A LITTLE SHAPE FOR THE BODY AND THE TAIL.
5. MARK OUT THE MOUTH, EYES, AND NOSE.



11. MAKE SOME PURPLE SHADOWS ON THE RIGHT, BOTTOM EDGES OF THE SHARK.
12. ONCE THE MOUTH IS TOTALLY DRY, CREATE SOME YELLOW-ORANGE TEETH INSIDE THE MOUTH.



15. LAYER MORE HORIZONTAL BLUE BRUSH MARKS IN THE BACKGROUND TO LOOK LIKE FISH BODIES. ADD TAILS TO THEM. MAKE SOME LARGER AND SOME SMALLER TO ADD DEPTH.



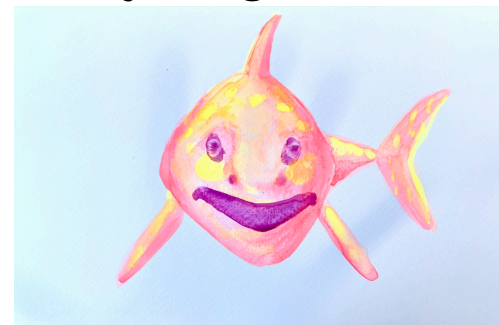
6. PAINT THE BODY OF THE SHARK WITH PINK. START FILLING IT IN ON THE RIGHT SIDES OF EACH SECTION. THEN, DON'T DIP INTO MORE PAINT (UNLESS NEEDED LATER); SIMPLY USE WATER TO SWEEP THAT PAINT OVER AROUND THE WHOLE SHARK. THIS WILL MAKE HIGHLIGHTS!
7. DRIP OR DAB MORE CORAL PAINT INTO THE AREAS THAT ARE SUPPOSED TO BE DARKER.



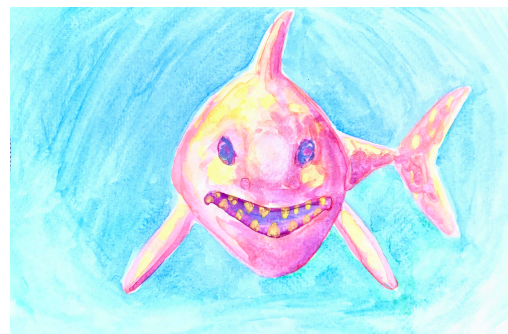
13. MAKE SURE THE SHARK IS TOTALLY DRY AROUND THE EDGES. THEN, PAINT THE BACKGROUND WITH BLUE. ADD SOME GREEN INTO THE BLUE TOWARD THE BOTTOM OF THE PAGE.



16. ADD SEAWEED AT THE OCEAN FLOOR. SCATTER ADDITIONAL FLOATING SEAWEED ACROSS THE BACKGROUND.



8. DROP YELLOW-ORANGE HIGHLIGHTS ONTO THE SHARK'S FACE AND BODY. THEN, LET THAT DRY COMPLETELY.
9. USE PURPLE PAINT TO OUTLINE AND FILL IN THE MOUTH.
10. CREATE TWO DOTS FOR THE NOSE AND THEN MAKE IT'S OVAL EYES. WHILE THE EYES ARE STILL WET, DAB YOUR FINGER ON EACH EYE. IT WILL KINDA LOOK LIKE AN EYEBALL!!!



14. LET THE PAINTING DRY COMPLETELY. MAKE ANOTHER LAYER OF BLUE SURROUNDING THE SHARK. THIS DOESN'T NEED TO BE TOO DARK, BUT MAYBE JUST A LITTLE MORE CONTRAST THAN BEFORE. YOU CAN ALSO USE THIS TIME TO SMOOTH OUT ANY BRUSH STROKES YOU DIDN'T LIKE BEFORE.